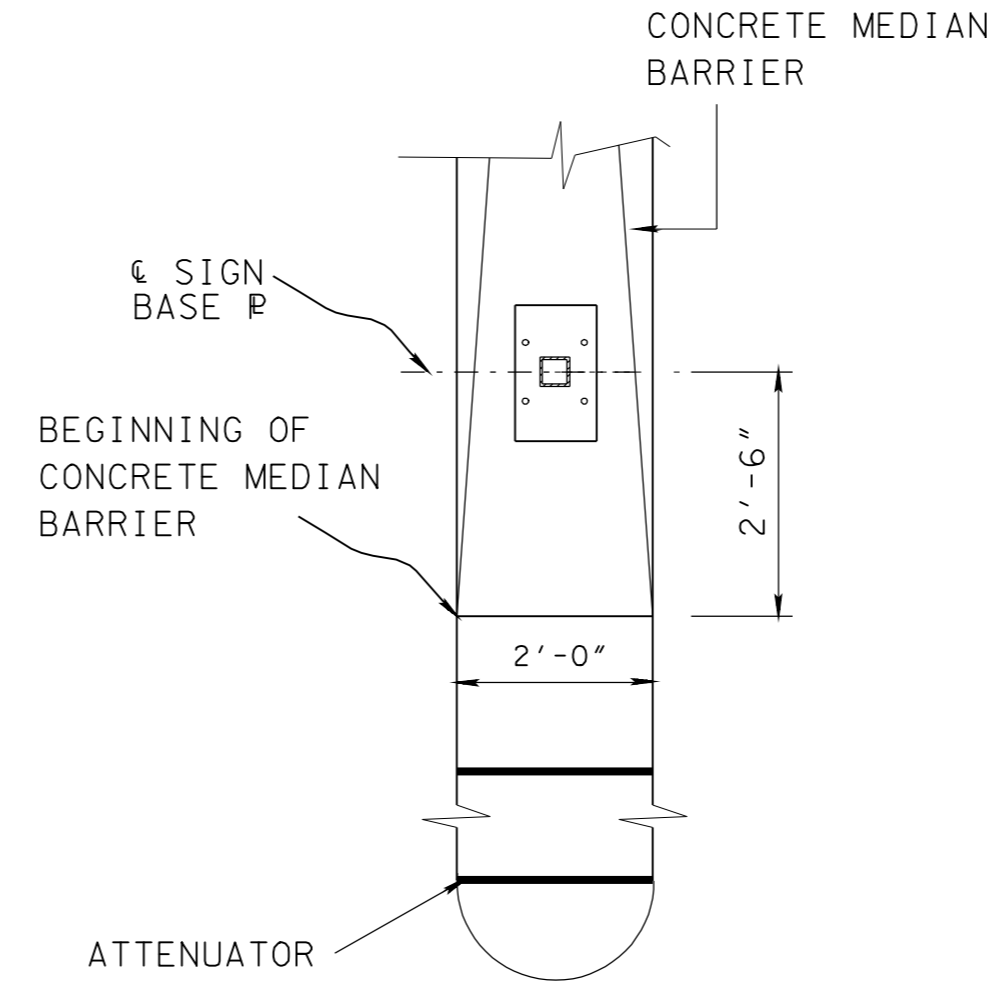
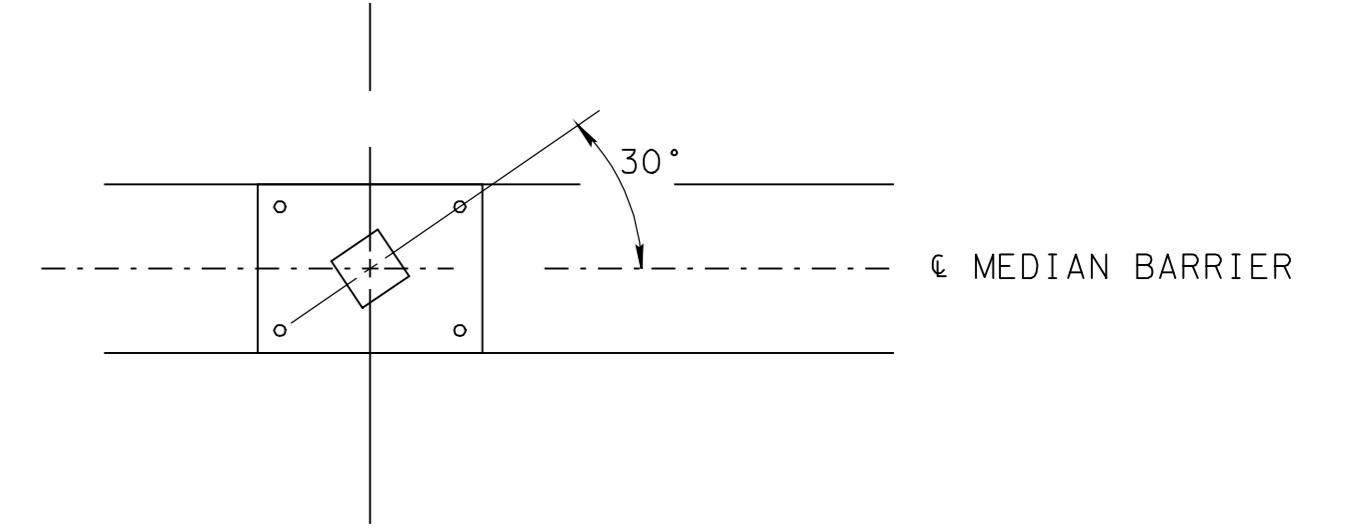


DETAILS FOR MOUNTING  
SMALL AND REGULAR  
SIGNS ON CONCRETE MEDIAN BARRIERS ① ②  
(TO BE PAID FOR UNDER ITEM NO. 713-30.09)



LOCATION DETAIL FOR  
MOUNTING EXIT GORE SIGNS ON  
CONCRETE MEDIAN BARRIERS ③



SIGN ORIENTATION  
DETAIL FOR  
H.O.V. SIGNS MOUNTED  
ON CONCRETE MEDIAN BARRIERS ④

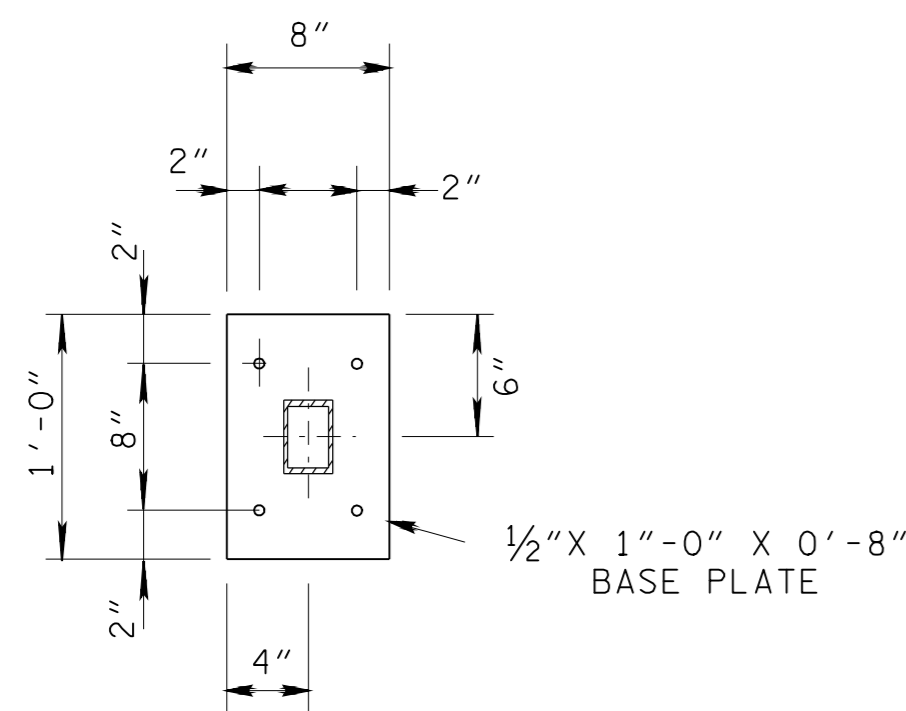
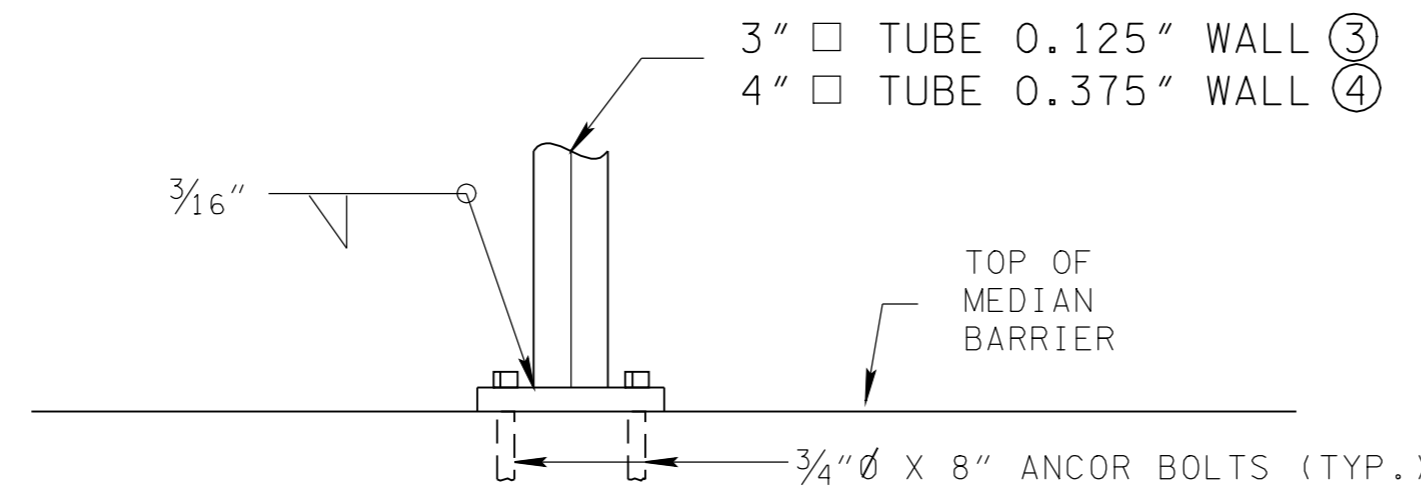


PLATE DETAIL



ELEVATION

DETAILS FOR MOUNTING  
LARGE SIGNS ON CONCRETE MEDIAN BARRIERS ③ ④  
(TO BE PAID FOR UNDER ITEM NO. 713-30.10)

#### GENERAL NOTES

- (A) WELDING SHALL BE IN ACCORDANCE WITH AASHTO SPECIFICATIONS.
- (B) ALL STEEL SHALL BE GALVANIZED AFTER FABRICATION AND CONFORMING TO THE REQUIREMENTS OF ASTM A123. DAMAGE TO THE COATING SHALL BE REPAIRED SUBSEQUENT TO ERECTION.
- (C) MATERIAL FOR PLATES SHALL BE ASTM A36 STEEL.
- (D) MATERIAL FOR TUBES TO BE ASTM A500 GRADE B STEEL.
- (E) ALL BOLTS AND WASHERS SHALL BE MADE OF MATERIAL CONFORMING TO ASTM A307.
- (E) MINIMUM CLEARANCE BETWEEN BOTTOM OF THE SIGN AND TOP OF BARRIER SHALL BE 48".
- (G) PLATE TO BE CENTERED ON BARRIER CENTER LINE.

#### DESIGN NOTES

- ① FOR (18"X48") EMERGENCY MILE MARKER OR (12"X24", 12"X36" OR 12'X48") STANDARD MILE MARKERS.
- ② FOR (36"X48") SPEED LIMIT, (48"X72" OR 48"X60") TRUCK RESTRICTION SIGNS (IF DIRECTED BY REGIONAL TRAFFIC ENGINEER) OR (36"X36") DIAMOND WARNING SIGNS.
- ③ FOR EXIT GORE SIGNS (72" X 48" OR 90" X 48").
- ④ FOR H.O.V. SIGNS (84" X 60").

STATE OF TENNESSEE  
DEPARTMENT OF TRANSPORTATION

DETAILS FOR  
SIGNS MOUNTS  
ON CONC.  
MEDIAN BARRIERS

2-29-12 T-S-21